



THE COMPLETE

AUSTRALIAN COASTAL STYLE



LOOK BOOK GUIDE



COOPER
& BLAKE
ARCHITECTURE



Table of Contents

- Welcome
- Australian Style
- Palette & Mood
- Project Examples
- Product Samples
- Holistic Design
- Next Steps



Welcome

Hello & Welcome!

We're thrilled that you've chosen to explore our Australian Coastal Style guide.

As you delve into the pages ahead, you'll discover the beauty of natural tones and textures, all inspired by Australia's laid-back beach life.

This guide is your canvas to visualise and craft your unique coastal haven. With a clear vision and curated styling, you'll be able to seamlessly blend the relaxed vibe of the coast with modern elegance. Remember, every coastal home tells a story and yours is just beginning.

Enjoy the journey of creating your own Australian Coastal Style sanctuary!

The Australian Coastal style has undergone an evolution, embracing a more natural and balanced colour palette that echoes the serene tones of our stunning coastline. Architects and interior designers now utilize neutral palettes, focusing on textural natural materials to create a sense of balance and harmony.

Australia's coastlines offer a captivating richness and untamed beauty that can be embraced by those seeking more daring and profound tones in their interiors. The modern design world has embraced the "coastal" style, incorporating a wide range of colours and textures, including moody blues, captivating rusts, deep seaweed greens, and rugged rocky greys. This style no longer confines you to a white-on-white palette, but instead allows both lovers of modern minimalism and larger-than-life maximalists to indulge in its allure.

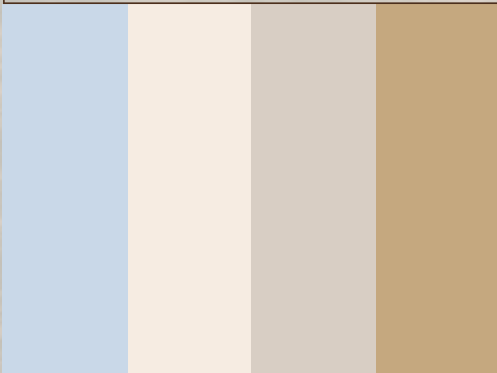


Australian Coastal

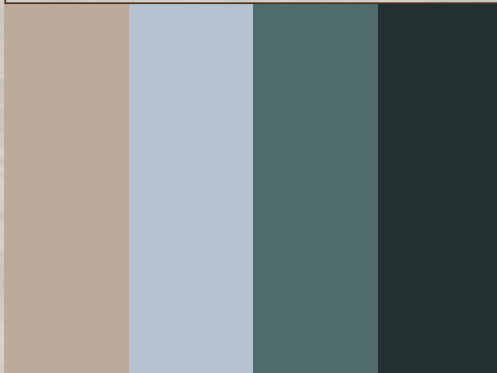
AUSTRALIAN COASTAL STYLE



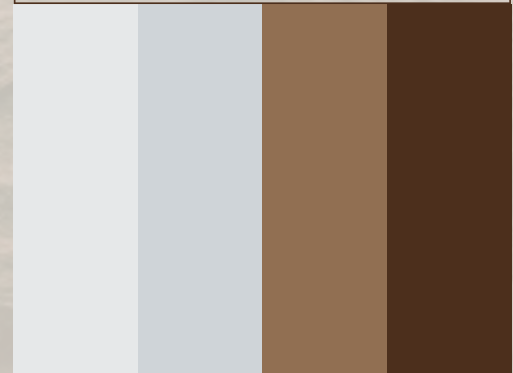
01.



02.



03.



01.

Native Australian Timber

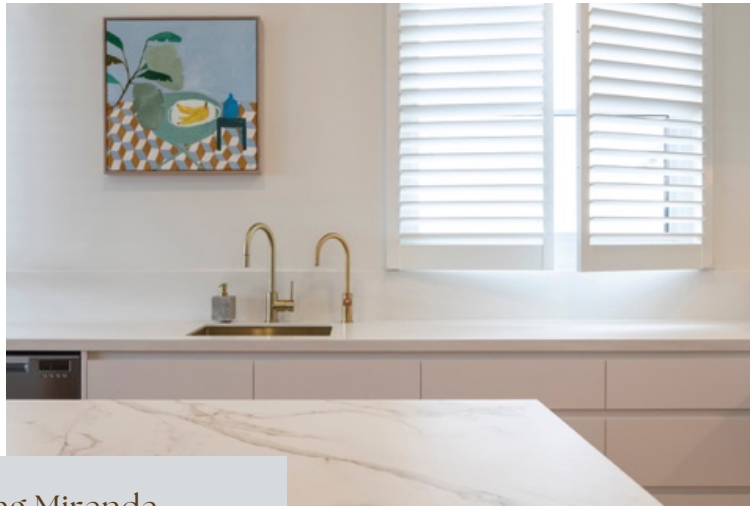
Sea Blue Accents

Crisp Textural Stone

Brass Fixtures

Filtered Natural Light

Bright & Joyful



Restoring Miranda
by Cooper & Blake Architecture



02.

Native Australian Timber

Deep Ocean Green

Robust Materiality

Bronze Windows

Natural Light

Outdoor Living



This ledoo
by Cooper & Blake Architecture



03.

Native Australian Timber

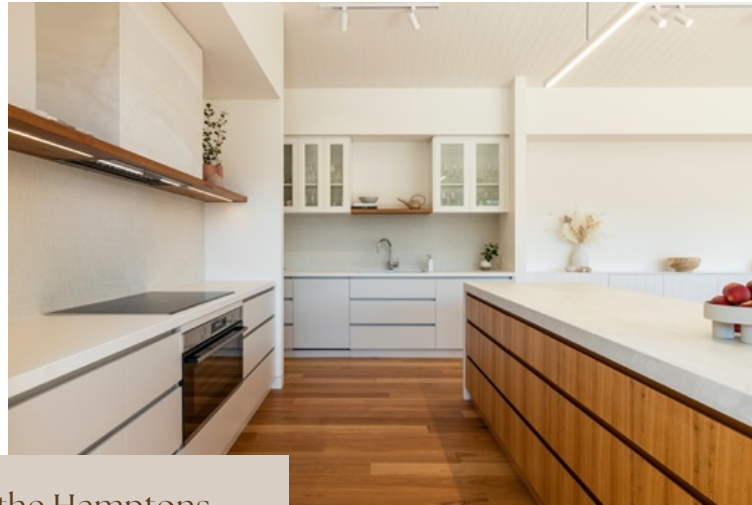
Warm - Off White tones

Soft Textural Stone

*Locally sourced
Sandstone*

Vertical Panelling

Calming & Minimal

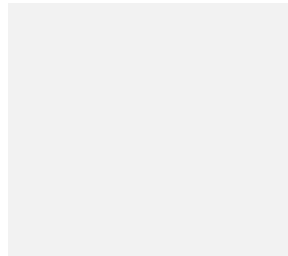


Munday in the Hamptons
by Cooper & Blake Architecture

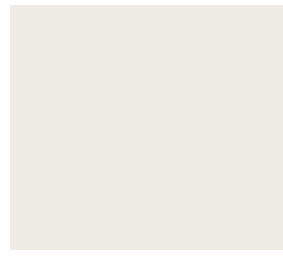


Paints

Selecting the right paint finish is a crucial factor in achieving the modern coastal design style. When you're aiming for a glow that mirrors the sun-kissed Australian coast, matte and satin finishes are generally an ideal selection. These finishes absorb light rather than reflect it, resulting in a soft, muted appeal that perfectly complements the serene and natural ambience of the coastal aesthetic.



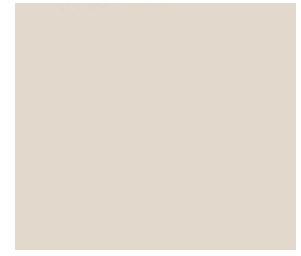
Dulux
Lexicon Quarter



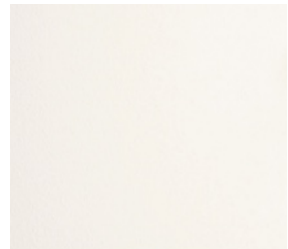
Dulux
Natural White



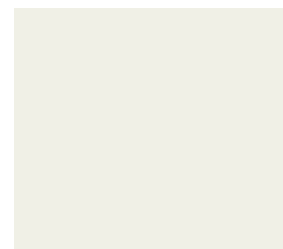
Dulux
Hog Bristle Quarter



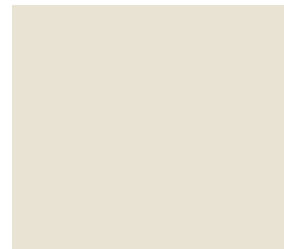
Dulux
Clay Pipe Half



Tint
Old School



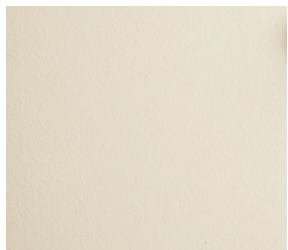
Taubmans
Whisper White



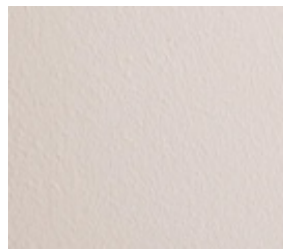
Dulux
White Dune



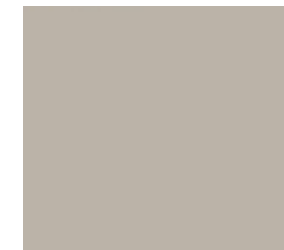
Tint
Couch Potato



Tint
Only Yesterday



Tint
Fika



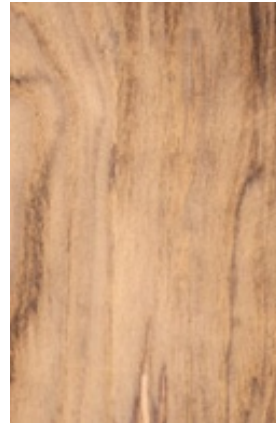
Dulux
Blind Date



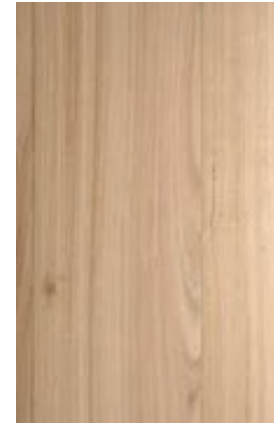
Dulux
Pozieres

Timbers & Veneers

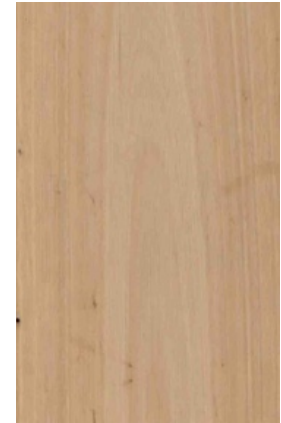
Choosing native and ethical timbers for your home not only contributes to a sustainable lifestyle, but it also brings an innate warmth and character to your space. These timbers, deeply rooted in the Australian landscape, offer an array of rich, earthy tones that gracefully counterbalance the light and airy palette of the coastal style. This careful blend ensures that your home avoids a washed-out, overly saturated look, instead, thriving with a depth and richness that highlights the beautiful contrast.



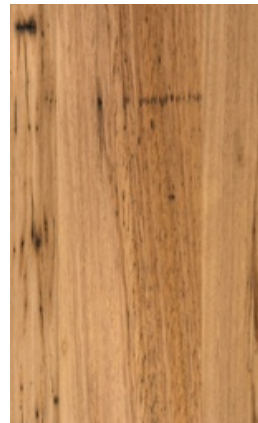
Victorian Ash



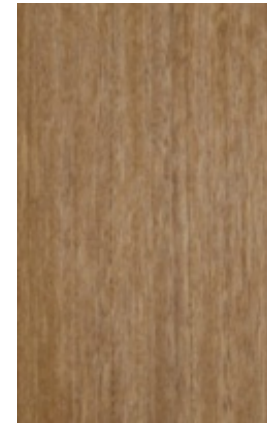
Tasmanian Oak



Stringybark



Bluckbutt



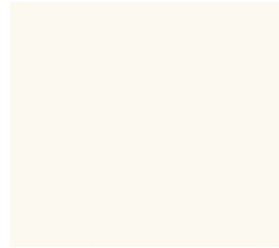
Tallowwood



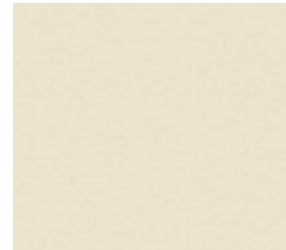
Ironbark

Laminates

Laminates have truly journeyed a long way since their inception, evolving from a practical solution to a heartening inclusion in modern coastal interiors. Today, they are valued not merely for their economic advantages but for the depth and versatility they offer. When thoughtfully used as a breather between the richness of tiles and timbers, or as a standalone statement colour, laminates can harmoniously blend into your design while also being cost-effective.



Laminex
Ghostgum



Laminex
Pumice

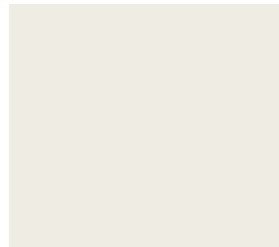


Laminex
Alpine Mist

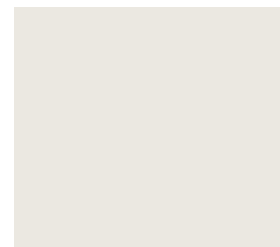


Laminex
Sarsen Grey

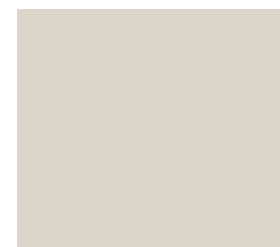
Warm



Polytec
White Mist



Polytec
Gossamer White



Polytec
Amaro



Polytec
Pallido

Cool



Laminex
Portsea



Laminex
Otway



Laminex
Moroccan Clay



Polytec
Batten Oak Woodmatt

Bold

Tiles

Choosing tiles for your home can sometimes feel daunting. It's all about deciding whether you want your tiles to make a statement or blend seamlessly with the overall tonal aesthetic.

As lovers of intricate details, we're big fans of mosaic tiles for features as they add an element of visual interest and depth. When it comes to floor tiles, we recommend the 300 x 600mm format, this shape elongates the space and exudes a luxury feel. Handmade tiles offer a beautiful textural quality, but if they're out of your budget range, opt for matte finish tiles to achieve a similarly elevated, textured look without the hefty price tag.



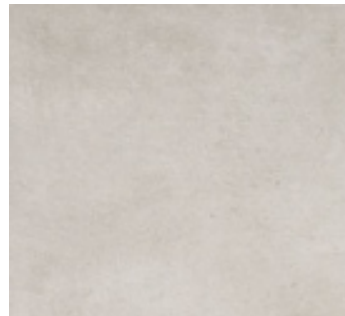
Academy Tile
Kreuz- Nagoya Range



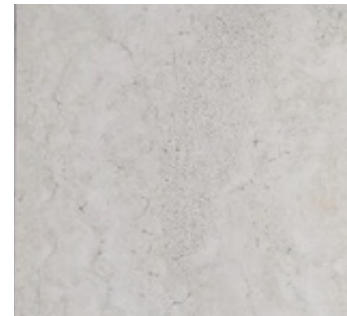
Academy Tile
Matelier - Equipe Range



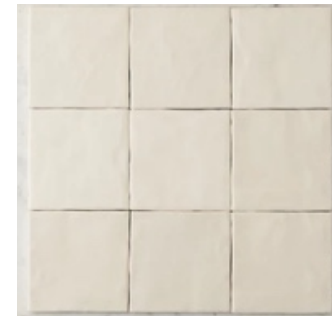
Academy Tile
Plimepaplika - Nagoya Range



Artedomus
Urban - Ivory 300 x 600mm



Tile CCloud
Byron Travertine 300 x 600mm



Tile CCloud
Newport Matte Bone



Tiles of Ezra
Moroccan Zellige Mosaic



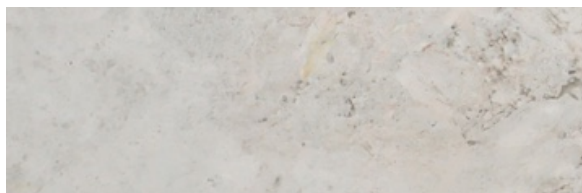
Tiles of Ezra
EZRTIERSTX ESTRELA NIEVE



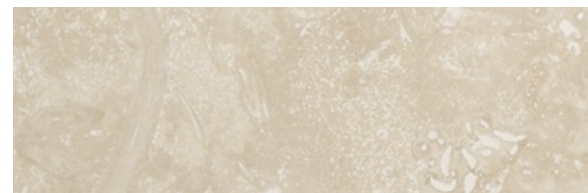
Fibonacci
The Sunbaker

Stone

When seeking stone finishes, we recommend considering either natural stone or porcelain panels. Assessing your overall space will assist in deciding whether to choose a solid surface or a more visually textured option. Bear in mind that while natural stone brings a unique charm and character, porcelain panels offer superior durability and require less maintenance, ensuring your space remains pristine for longer periods. Natural stone, while visually stunning, will demand extra care to maintain its beauty over time.



CDK Natural Stone
Marble Lorde White



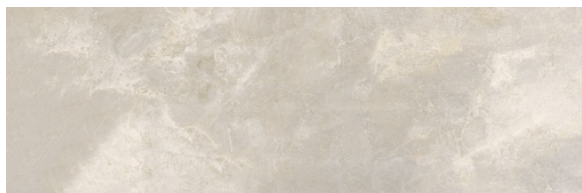
CDK Natural Stone
Travertine Clasiic Light



Sense Stone - Cosentino
Taj Mahal



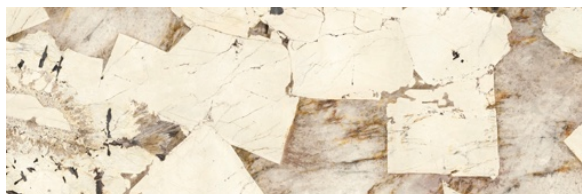
Dekton - Cosentino
Entzo



Artedomus
Royal Platinum



Artedomus
Maximum Bright Onyx



Artedomus
Mercury Patagonia



Artedomus
Beton White

Metals.

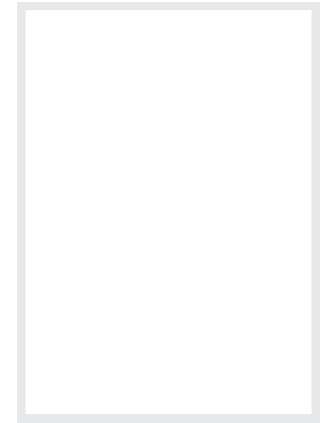
When it comes to selecting metal finishes for tapware and fixtures, it's important to consider whether your home primarily features warm or cool tones. A brushed finish can be a fantastic choice, adding an elemental and textural accent that truly brings the design to life. We generally recommend steering clear of gunmetal or black finishes, as these can create too stark a contrast against the tranquil, neutral tones that epitomize the coastal style.



Brushed Chrome



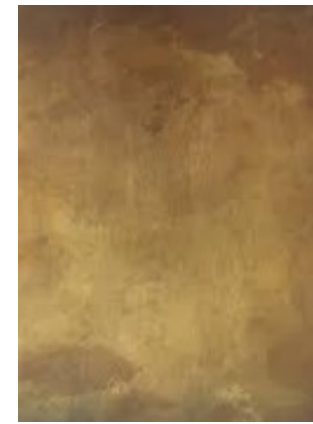
Brushed Nickel



Matte White (No Metal)



Brushed Brass



Aged / Natural Brass



Brushed Bronze

Wall Finishes

Adding textural quality or visual depth to your coastal interiors can be achieved remarkably through the thoughtful selection of wall finishes, going beyond plain plasterboard.

Consider options such as wall panelling, textured finish or wallpaper that add a tactile appeal and create a sense of depth. For an added touch of character, these finishes can be cleverly tied into your joinery pieces or tile layouts, creating a harmonious and well-integrated design.



Venetian Plaster



Limewash Paint



Classic VJ
Surround by Laminex



French Stripe
Surround by Laminex



Wallpaper
Olive et Oriel



Axon Cladding
James Hardie

Textiles

When it comes to choosing fabrics for your home, whether it be for curtains, upholstery, or carpets, we highly recommend opting for ethical and organic materials such as linen, cotton, and wool.

These natural fibres not only create a warm and cozy atmosphere but are also healthier for your home, loved ones, and the environment. They embody the essence of the coastal style – fresh, breezy, and grounded in nature, all while promoting sustainable living practices.



Natural Linen



Natural Linen with Stripe



Boucle Off White/ White



Corduroy



Montrose Range
Godfrey Hirst



Petra Range
Godfrey Hirst

Suppliers

When it comes to procuring fixtures and fittings for your coastal residence, we have suppliers we love and trust, all of which are locally based within Australia. These companies offer a wide range of high-quality home essentials, including stylish lighting options that beautifully illuminate your space, durable hardware that adds functionality and elegance to your interior, and exquisite tap ware that perfectly complements your coastal aesthetic. With exceptional craftsmanship and attention to detail, these trusted suppliers are will help you create the coastal home of your dreams.



ABI Interiors



Astra Walker



Yabby



Scala



Lo & Co Interiors



Designer Doorway



Nood Co

Zetr



Lighting Collective



Volker Haug Studio



Monduluce Lighting



GreenHouse Interiors

Holistic Homes

Holistic architecture offers a solution to that feeling of needing something more out of your living environment.

Blurring the boundaries between indoors and outside, it's an approach based on creating a unified whole that improves harmony and sustainability. Not only does holistic architecture bring beauty into residential spaces – it also brings practical advantages for everyone from busy families to young professionals in need of calm

Holistic architecture is a unique approach to design that recognizes the interconnectedness of all elements within a space. Beyond just aesthetics and functionality, this design philosophy takes into account the physical, emotional, and spiritual needs of the occupants. Holistic architecture embraces the complex aspects of our lives and merges them into a unified design that enhances the overall well-being of its inhabitants. It's an exciting and innovative approach that prioritizes sustainability, energy efficiency, and social responsibility. With holistic architecture, we're not just creating buildings; we're designing spaces that will improve the quality of life for generations to come.



How we can help you...

Our Holistic Home process is supported by intensive pre-design work, which we offer in the form of consultations and preliminary planning and pricing packages. These early efforts have been instrumental in delivering projects that run smoothly and as-planned, ensuring complete satisfaction for our happy homeowners.

By creating this guide, we hope to arm you with some of the tools and exercises that we use in our own pre-design work. Leveraging these insights will help you get ready to plan a project that's destined for success. Should you choose to partner with our team for your custom home, you'll have already laid the foundation for a productive project kick-off that correctly addresses your needs, preferences, and limitations.

Thank You & TO GET STARTED



If you've reached the point where you're ready to start planning your project, the first step is to do an initial consultation with our team.

These calls serve as springboards for your project, allowing us to get to know each other while we discuss your overall goals. From there, we'll make recommendations on what services will best suit your planning needs, and help you prepare for the next phase.

Learn more about our consultation calls and how to book them via our website.



[0466 857 873](tel:0466857873)



hello@cooperandblakearchitecture.com



[@cooperandblakearchitecture](https://www.instagram.com/cooperandblakearchitecture)

Jessica Murray

Director

B. Architecture | Ma. Architecture
ARBV registered Architect no. 20473